

PART OF THE S.E. 1/4, SEC. 30, T.6N., R.1W., S.L.B. & M.

28

## WEST OGDEN ADDITION

BLOCKS 9 & 18

TAXING UNIT: 25

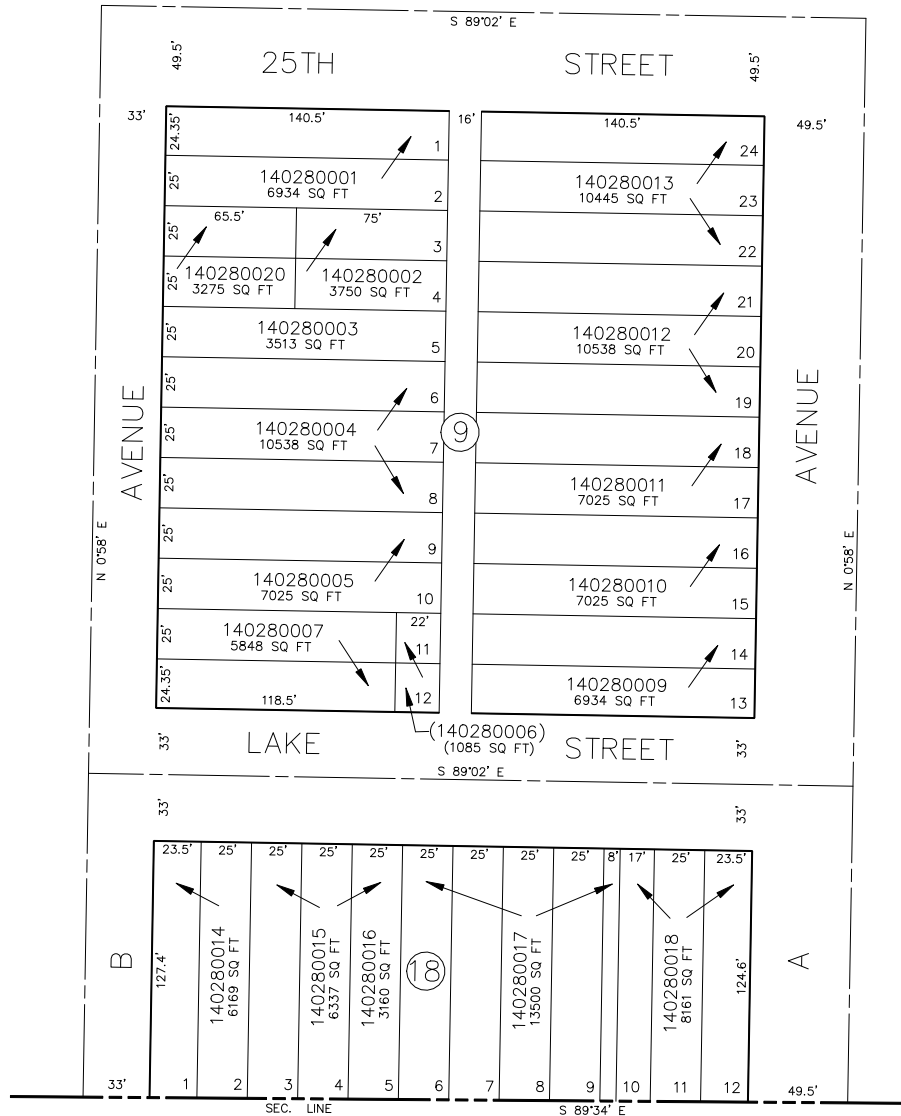
IN OGDEN CITY

SCALE 1" = 50'

SEE PAGE 24

SEE PAGE 27

SEE PAGE 23



SEE PAGE 39

FOR COMPLETE ENG DATA SEE  
ORIGINAL DEDICATION PLAT IN  
BOOK 6, PAGE 18 OF RECORDS.